

## Instructions to run FI2EPI

- 1- Go to the: [https://www.adobe.com/support/flashplayer/debug\\_downloads.html](https://www.adobe.com/support/flashplayer/debug_downloads.html), download "Download the Flash Player projector content debugger" depending on your operative system

### Windows

- [Download the Flash Player projector content debugger](#)
- [Download the Flash Player projector](#)

### Macintosh

- [Download the Flash Player projector content debugger](#)
- [Download the Flash Player projector](#)

### Linux

- [Download the Flash Player Projector \(64-bit\)](#)
- [Download the Flash Player Projector content debugger \(64-bit\)](#)

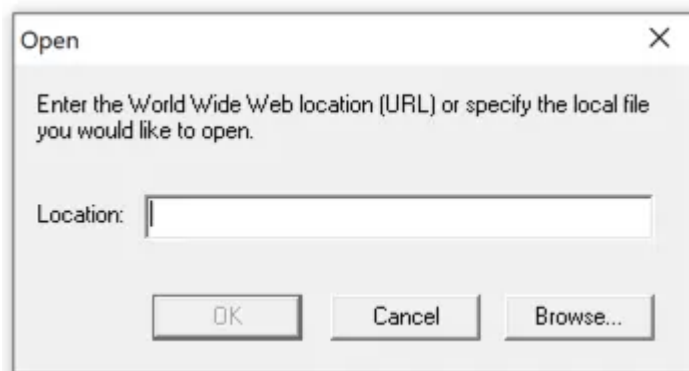
### PlayerGlobal (.swc)

- [Download the playerglobal.swc to target the latest version APIs](#)

- 2- Open "Adobe Flash Player", click "File" e "Open"



- 3- Select the file **SWF** no "Open box"



FI2EPI.swf

- 4- The green screen will appear, and you can press the start button.