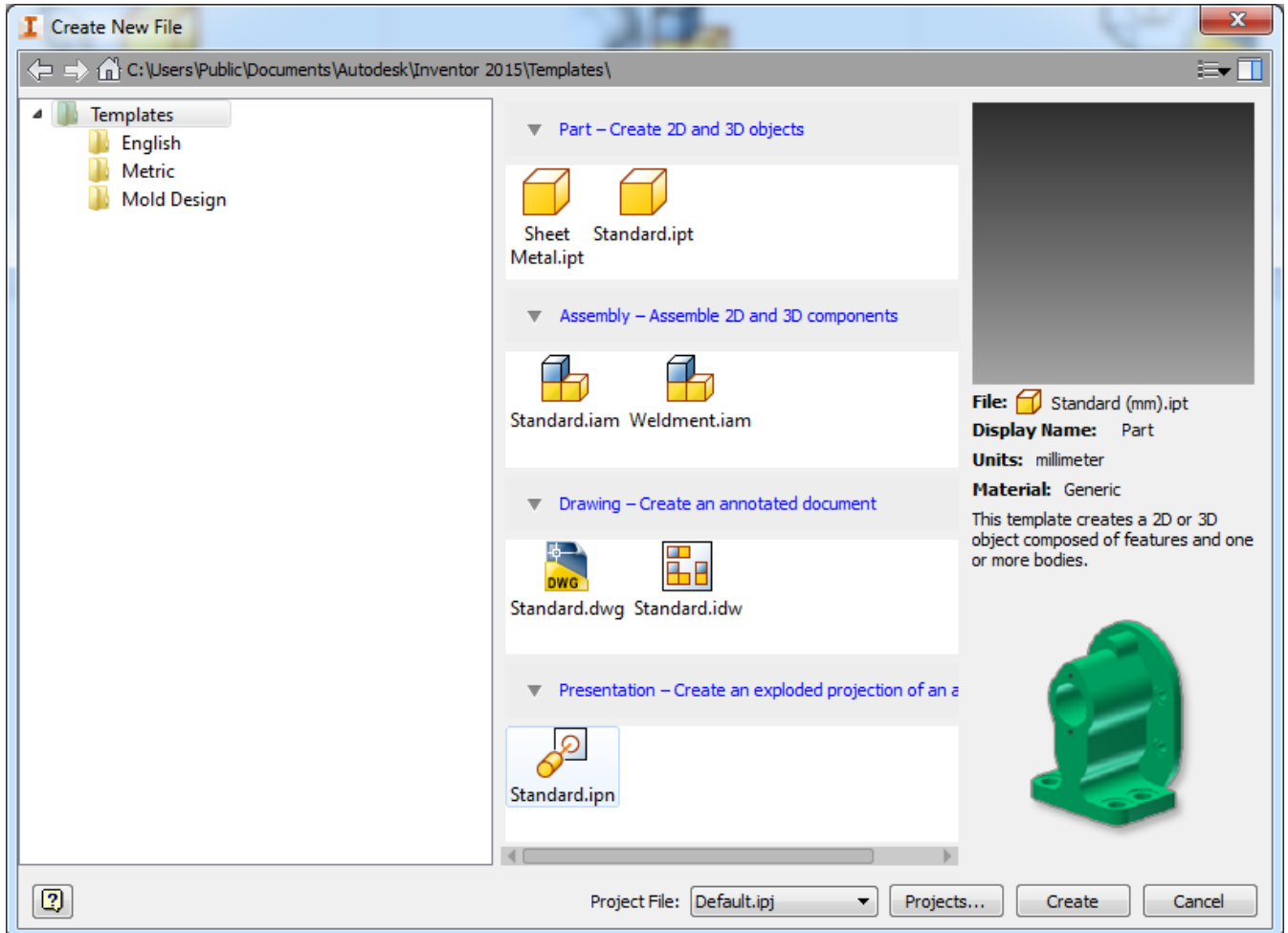


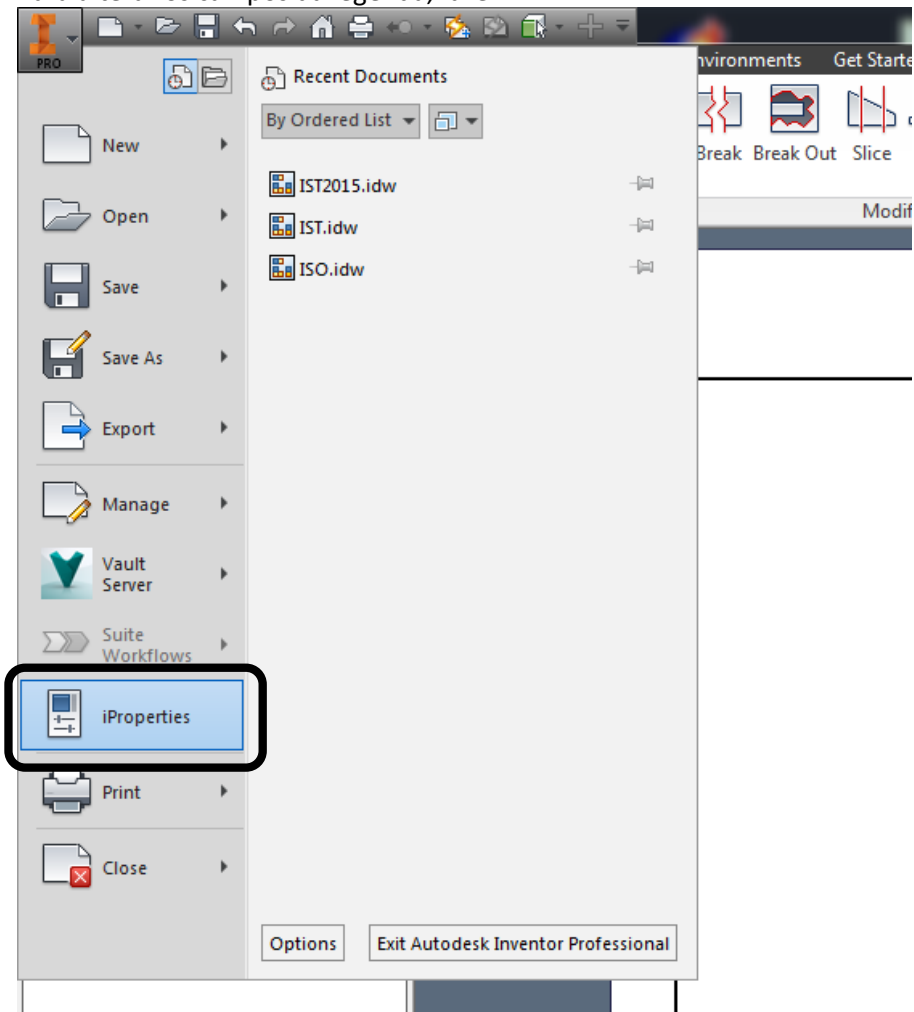
## Instalar a folha de desenho IST no Autodesk Inventor

Localizar a pasta dos templates, por default é:

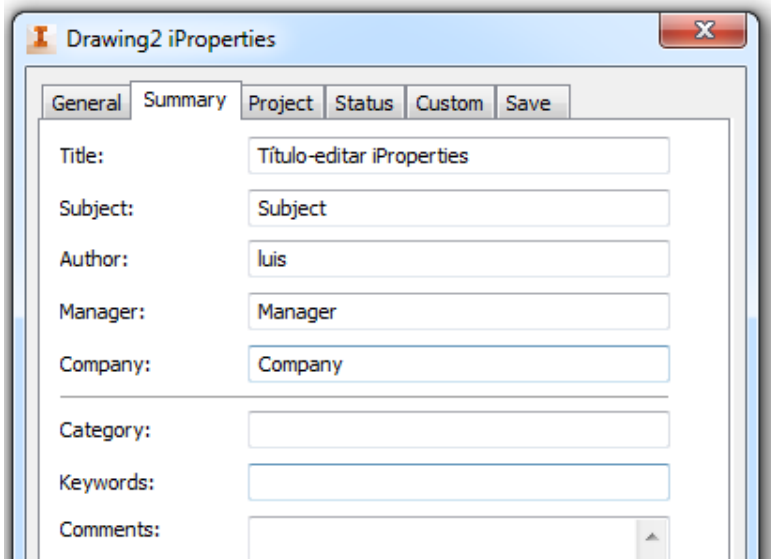
C:\users\public\documents\autodesk\inventor 2015\templates\metric



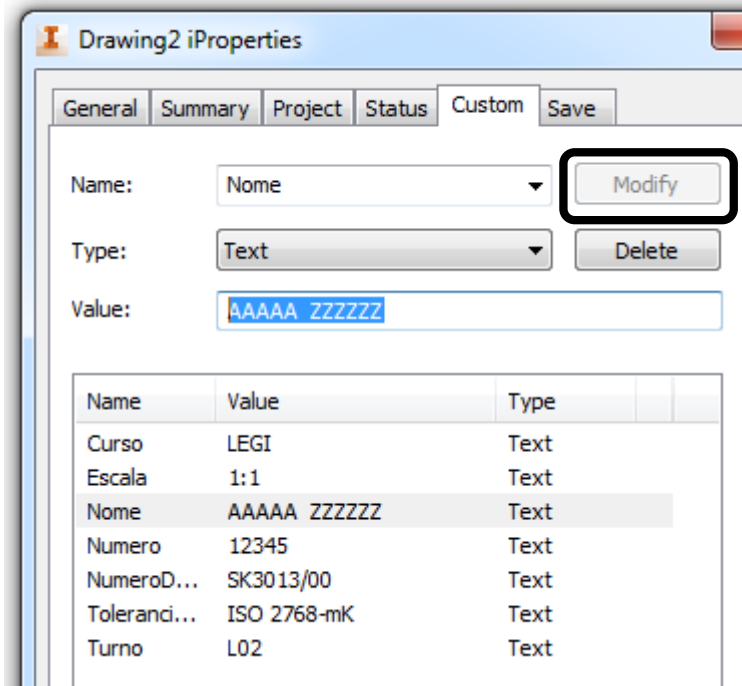
Para alterar os campos da legenda, fazer:



Alterar o Title no separador Summary:



No separador custom, editar os campos pretendidos (não esquecer clicar em “Modify”!)



Para ativar tamanhos de folha diferentes, basta fazer double-click na folha pretendida, à esquerda:

